

forestry

2017 forestry series

Since 1960

ZACCARIA
QUALITY TRAILERS



Since 1960

ZACCARIA

QUALITY TRAILERS

2017 Series



-60 years of experience

-More than 30.000 trailers sold

-Producing more than 100 models

-6 prize Eima for technical innovation



ZAM 60 FORESTAL

with sides made of rectangular tubular steel



ONE AXLE TRAILERS FORESTRY SERIES

Standard equipment:

- Three-way tipping system
- Driving axle. Differential with 6 columns on ZAM 40 – 50 Forestal.
- Reinforced differential with 8 columns on ZAM 60 - 70 FORESTAL.
- Frontal safety grid.
- Nr. 4 rear bushes for inserting poles diam. 75 mm ZAM 40 – 50 FORESTAL
- Diam. 90 per ZAM 60 – 70 FORESTAL
- Assembling and running test for forestry cranes.
- chequered plate loading platforms. Rear poles.
- Rear side opens downwards/upwards.
- Extension side attachment.

On demand:

- Increased wheels. Bushes for inserting poles.
- Poles for timber haulage. Special draw bar eye.
- Special speed reducer with PTO to operate crane's hydraulic pump.
- Hydraulic system to disengage speed reducer
- Sides in rectangular tubular steel.
- Steering draw bar on hydraulic command on ZAM 60 - 70 FORESTAL.



New series RB forestry lower version with rear tipping device

MODEL	BODY SIZE cm.	GROSS WEIGHT Tons	TARE Tons	TYRES TYPE	H.PLATFORM cm.	BRAKE SYSTEM	TIPPING
ZAM 40 Forestal	260 x 160 x 40	5.0	0.9	10.0/75 - 15.3 new	83	Mechanical	Three-way
ZAM 50 Forestal	300 x 185 x 50	6.0	1.3	11.5/80 - 15.3 new on demand 36x11 cov.	92	Hydraulic	
ZAM 60 Forestal	350 x 200 x 50	7.0	1.7	14-17,5 new on dem. 385/55R 19,5 cov.	95	Hydraulic	
ZAM 70 Forestal	400 x 220 x 50	8.0	2.0	15-19,5 new on dem. 385/55R 19,5 cov.	110 100	Hydraulic	
ZAM 60 RB Forestal	350 x 200 x 50	7.0	1.7	14-17,5 new on dem. 385/55R 19,5 cov.	80	Hydraulic	Rear
ZAM 70 RB Forestal	400 x 220 x 50	7.0	2.0	15-19,5 new on dem. 385/55R 19,5 cov.	95 85	Hydraulic	

*The maximum load capacity of the trailers can be adapted in conformity with the regulations in force in your country.

forestry

trailers 2



ZAM 200FORESTAL T loaded with poles Exte.

ZAM FORESTAL T

Loading deck with 8 shaped crossbars to support logs with vertical poles 1.50 m high (with fixing screw).

Steering front and rear axles.

Driving central axle.
Front safety grid.

Hydraulic parking stand. Toolbox.

Possibility to mount a forestry crane.

On demand:

- Special speed reducer with PTO to operate crane's hydraulic pump. Special draw bar eye.
- Hydraulic uplift system for front axle.
- Hydraulic system to disengage speed reducer.
- Steering draw bar on hydraulic command.
- Supporting poles for timber made of alluminium Exte.
- Supporting poles for timber pull-out 1.50m high + 80 cm (with fixing screw).

Rear extension with hydraulic pull-out 1 m

with 2 crossbars with poles H 1.5 m.

Rear crane assembled on hydraulic pull-out.



MODEL	BODY SIZE cm.	GROSS WEIGHT Tons	TARE Tons	SUSPENSION	TYRES TYPE	H. PLATFORM cm.	BRAKE SYSTEM
ZAM 200 FORESTAL T	550x250	27.0	6.0	Hydraulic	560/45 - R 22,5	100	Pneumatic
ZAM 200 FORESTAL I	550x250	27.0	6.0	Hydraulic	560/45 - R 22,5	100	Hydraulic

*The maximum load capacity of the trailers can be adapted in conformity with the regulations in force in your country.

double axle trailers

forestry

3 Log transport

ZAM 140 FORESTAL TC SUPER

On series on independent hydraulic suspensions, independent and transverse swinging of axle. High swinging of suspensions. 24 cm: 12 + 12



ON REQUEST:
HYDRAULIC TRACTION
ALSO IN TEO-WHEEL
TRACTION VERSION

Standard equipment:

Loading deck with 6 shaped crossbars to support logs, with vertical poles 1.50 mt high. driving front axle 8 columns.
Steering rear axle 8 columns.
Possibility to mount a forestry crane.
Front safety grid.

On demand:

Hydraulic parking stand.
Special speed reducer with PTO to operate crane's hydraulic pump. Special draw bar eye for export.
Hydraulic lifting on rear axle with piston D E.
Hydraulic steering draw bar.
Hydraulic system to disengage the speed reduce r.
Cross beam for poles with additional poles.
wheel cover sheet metal.
Rear extension with hydraulic pull-out 1m with two crossbars H 1.5 m.

MODEL	BODY SIZE cm.	GROSS WEIGHT Tons	TRAILER' S TARE WITHOUT CRANE Tons	SUSPENSION	TYRES TYPE	H. PLATFORM cm.	BRAKE SYSTEM
ZAM 110 Forestal T	400x200	16.0	2.3	Leaf spring Cantilever	385/55R19,5 used on demand 14-17,5 new	85	Hydraulic or Pneumatic
ZAM 140 Forestal TC	430x210	18.0	3.0		385/65 - 22,5 new FLOT on demand 15-19,5 new	95	
ZAM 140 Forestal TL	470x210	18.0	3.4		90		

Standard equipment on super version: independent hydraulic suspensions, smooth loading platform in Domex material
On request: double simultaneous traction version, load leveling sy stem in manual.

MODEL	BODY SIZE cm.	GROSS WEIGHT Tons	TRAILER' S TARE WITHOUT CRANE Tons	SUSPENSION	TYRES TYPE	H. PLATFORM cm.	BRAKE SYSTEM
ZAM 110 Forestal T Super	400x225	16.0	2.	Hydraulic Independent	385/65 - 22,5 new FLOT on demand 15-19,5 new	100	Hydraulic or Pneumatic
ZAM 140 Forestal TC Super	430x225	18.0	3.1				
ZAM 140 Forestal TL Super	470x225	18.0	3.5				

*The maximum load capacity of the trailers can be adapted in conformity with the regulations in force in your country.

ZAM 110 FORESTAL SUPER



**ON REQUEST:
HYDRAULIC TRACTION**

Standard equipment:

- Three-way tipping system
- Driving front axle 8 columns
- Self-steering rear axle 8 columns.
- Loading platform in chequered steel
- 4 rear columns and rear side opens upwards and downwards.
- Attachments for extension sides.
- Front safety grid.
- Nr 4 rear bushes for inserting poles diam. 90 internal side.
- Nr 4 bushes for inserting poles.
- Possibility to mount a forestry crane.

On demand:

- Hydraulic parking stand
- Special speed reducer with PTO to operate crane's hydraulic pump.
- Hydraulic lifting on rear axle.
- Hydraulic steering draw bar on hydraulic command.
- Hydraulic system to disengage the reducer.
- Special draw bar eye.
- Poles for loading logs with fixing screw.
- Sides made of rectangular tubular steel.
- Professional equipment.
- Lateral splitted sides in half.

MODEL	BODY SIZE cm.	GROSS WEIGHT Tons	TRAILER'S TARE WITHOUT CRANE Tons	SUSPENSION	TYRES TYPE	H. PLATFORM cm.	BRAKE SYSTEM	TIPPING
ZAM 110 Forestal S	400x200X50	16.0	2.7	Spring Cantilever	385/55R19,5 cov. on demand 14-17,5 new	102	Hydraulic or Pneumatic	Three-way
ZAM 110 Forestal L	400x210X50	16.0	3.0		385/65-22,5 new Flot on demand 15-19,5 new	110		

Standard on Super version:

Independent hydraulic suspensions
Independent and transverse swinging of axles. High swinging of suspensions.
(24 cm - 12 + 12)

STANDARD ON ZAM 110 FORESTAL SUPER:

Domex loading platform. Increased axles and differential.
Independent hydraulic suspensions.

On request on ZAM 110 FORESTAL SUPER:

Double traction version, differential with final reducer 10 columns.

MODEL	BODY SIZE cm.	GROSS WEIGHT Tons	TRAILER'S TARE WITHOUT CRANE Tons	SUSPENSION	TYRES TYPE	H. PLATFORM cm.	BRAKE SYSTEM	TIPPING
ZAM 110 Forestal Super	400x220X50	16.0	3.3	Hydraulic Independent	385/65 - 22,5 on demand 15 - 19,5 new	118	Hydraulic or Pneumatic	Three-way

*The maximum load capacity of the trailers can be adapted in conformity with the regulations in force in your country.

double axle trailers

forestry

5

Forestal series
tons 18

Standard equipment:

- Three-way tipping system
- Front driving axle 8 columns
- Self-steering rear axle.
- Loading platform in chequered steel.
- Rear columns and rear side open upwards and downwards.
- Attachments for extensions sides
- Front safety grid.
- 4 bushes for inserting poles internal side
- 4 inserting poles for lateral side.
- Possibility to mount a forestry crane.

On demand:

- Hydraulic parking stand.
- Special speed reducer with PTO to operate crane's hydraulic pump.
- Hydraulic lifting of rear axle.
- Hydraulic steering draw bar on hydr. command
- Hydraulic system to disengage the reducer.
- Poles for loading log 1.5 m high with fixing screw.Extension sides.
- Special draw bar eye.
- Sides made of rectangular tubular steel.
- Lateral sides separated in half.

ON REQUEST:

PROFESSIONAL EQUIPMENT:

- Loading platform made of high-wear material.
- Industrial columns
- Concealed hinges on the sides
- Automatic opening of the rear side



ZAM 140 FORESTAL C-SUPER
with hydraulic traction

Standard on ZAM 140 FORESTAL SUPER - ZAM 110 FORESTAL SUPER

- Independent Hydraulic suspensions.
- Independent and transverse swinging of axles, that allows to keep all 4 wheels on the ground.
- High swinging of suspensions (24 cm. 12 + 12)



MODEL	BODY SIZE cm.	GROSS WEIGHT Tons	TRAILER'S TARE WITHOUT CRANE Tons	SUSPENSION	TYRES TYPE	H. PLATFORM cm.	BRAKE SYSTEM	TIPPING
ZAM 140 Forestal C	430x210X60	18.0	3.6	Spring Cantilever	385/65 - 22,5 new flot on demand: 425/55 R19,5 used 15-19,5 new	120	Hydraulic or Pneumatic	Three-way
ZAM 140 Forestal L	470x210X60	18.0	3.9			115 120		

STANDARD ON ZAM 140 FORESTAL SUPER:

Independent hydraulic suspensions. Domex loading platform. Increased axles and differential.

On request on ZAM 140 FORESTAL SUPER:

double simultaneous traction version, load leveling system in manual.

MODEL	BODY SIZE cm.	GROSS WEIGHT Tons	TRAILER'S TARE WITHOUT CRANE Tons	SUSPENSION	TYRES TYPE	H. PLATFORM cm.	BRAKE SYSTEM	TIPPING
ZAM 140 Forestal C Super	430x230X60	18.0	3.8	Hydraulic Independent	385/65 - 22,5 nuovi flot on demand: 425/55 R19,5 Cover. 15-19,5 new	125	Hydraulic or Pneumatic	Three-way
ZAM 140 Forestal L Super	470x230X60	18.0	4.1			120 125		

*The maximum load capacity of the trailers can be adapted in conformity with the regulations in force in your country.

Forestry crane with rack rotation with cylinders F2500 - F3000 - F3500 - F4000



F 3000

CRANE F2500 ideal for ZAM 40 Forestry line
CRANE F3000 ideal for ZAM 50 Forestry line
CRANE F3500 ideal for ZAM 60 Forestry line
CRANE F4000 ideal for ZAM 60 Forestry line

Standard equipment:

Rack with 400° rotation and return with one cylinder.
Secondary forearm with double sliding extension.
Independent hydraulic stabilizers.
Hydraulic continuous slewing 360.
Log grab.

F2500:

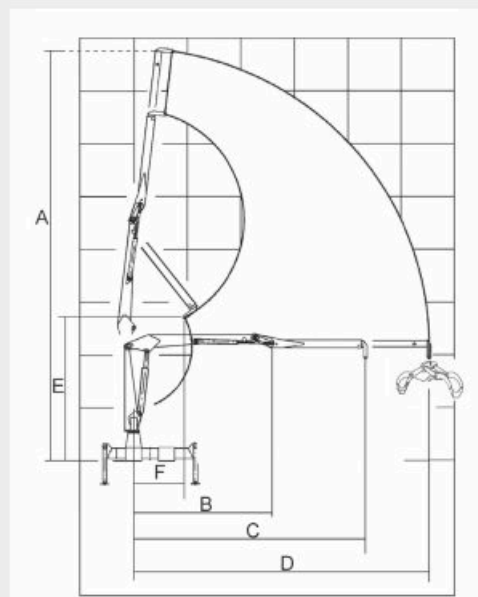
Low seat.
One-lever command.

F3000, F3500 e F4000:

Driver seat on the column
Double pedal and cloche lever. Industrial pump and oil kit.

FIGURES OF LIFTING CAPACITY DO INCLUDE THE WEIGHT OF ROTOR AND GRAB

DESCRIPTION		F2500	F3000	F3500	F4000
Net lifting moment	(KNm)	15	30	31	35
Log grab opening	(mm)	1,00	1,00	1,20	1,30
Pivot pin lifting power	(Kg)	1000	3000	3000	3000
Lifting capacity of extended boom with log grab	(Kg)	200	350	350	550
D -Maximum lenght with sliding extension	(mt)	4,30	4,70	6,00	5,00
C -Maximum lenght without sliding extension	(mt)	3,55	3,95	4,85	4,10
B -Lenght first sectoin	(mt)	1,90	2,10	2,55	2,20
Lifting capacity	(Kg)	650	800	900	1200
A - Maximum height with sliding extension	(mt)	5,60	6,50	7,80	6,75
E - Height at the minimum distance of loading	(mt)	1,90	2,15	2,40	2,30
F - Minumum distance to start lifting	(mt)	1,05	1,10	1,10	1,10
Widht with stabilizer closed	(mt)	1,60	1,60	1,90	1,90
Weight of crane including log grab trunks	(Kg)	520	760	850	1040



Forestry crane with rack rotation with cylinders

F5500 - F7500 - F8500

Standard equipment:

Rack with 400° rotation and return with double cylinder.

Driver's seat and cloche lever.

Hydraulic continuous slewing 360°.

Log grab.

Independent hydraulic stabilizers.

F5500

Secondary forearm with hydraulic movement.

Industrial pump and oil kit.

F7500 - F8500

Secondary forearm with double sliding extensions.

Double piston pump with double hydraulic circuit.

Hydraulic cooling plant with radiator.

All cranes can be equipped with:

Increased log grab and rotor.

Hydraulic power assisted controls.

Vertical stabilizers with hydraulic extension.

Remote control with proportional electro-hydraulic distributors.



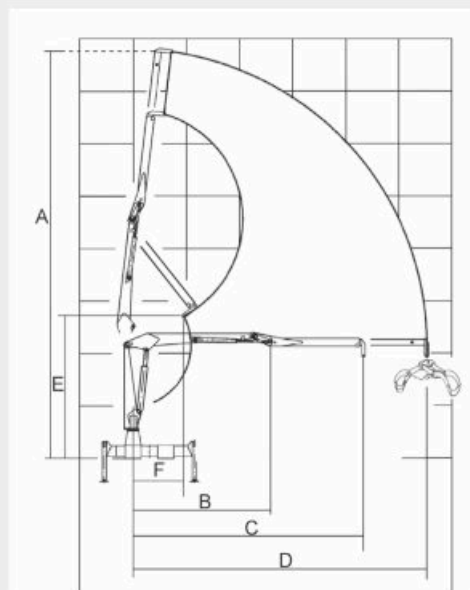
F 7500

CRANE F5500 ideal for ZAM 70 - 110 Forestry Line

CRANE F7500 ideal for ZAM 110 - 140 Forestry Line

CRANE F8500 ideal for ZAM 140 Forestry Line

FIGURES OF LIFTING CAPACITY DO INCLUDE THE WEIGHT OF ROTOR AND GRAB



DESCRIPTION		F5500	F7500	F8500
Net lifting moment	(KNm)	43	62	71
Log grab opening	(mm)	1,30	1,50	1,50
Pivot pin lifting power	(Kg)	3000	6000	6000
Lifting capacity of extended boom with log grab	(Kg)	500	550	500
D -Maximum lenght with sliding extension	(mt)	6,30	7,50	8,60
C -Maximum lenght without sliding extension	(mt)	4,85	5,10	5,50
B -Lenght first sectoin	(mt)	2,55	2,65	2,80
Lifting capacity	(Kg)	1200	1800	2300
A - Maximum height with sliding extension	(mt)	7,85	9,20	1,080
E - Height at the minimum distance of loading	(mt)	2,40	2,75	2,80
F - Minumum distance to start lifting	(mt)	1,00	1,10	1,10
Widht with stabilizer closed	(mt)	1,90	2,05	2,20
Weight of crane including log grab trunks	(Kg)	1150	1550	2000

Forestry crane with rack rotation with cylinders Penz-Austria 4Z - 4ZHL - 6Z - 6ZHL



standard equipment:

Rack with 400° rotation and return with single cylinder.

Secondary forearm with hydraulic telescopic on 4Z- 4ZHL - 6Z.

Secondary forearm with double hydraulic telescopic on 6ZHL.

Vertical hydraulic stabilizers with mechanical extension and cylinder

Driver's seat on the column.

Double pedal and cloche lever.

Double pump with cylinder and double circuit.

Hydraulic slewing 360° continuous.

Log grab.

Hydraulic cooling plant with radiator.

Safety switch off LMB System in case of overweight.

On request:

Vertical hydraulic stabilizers with hydraulic extension

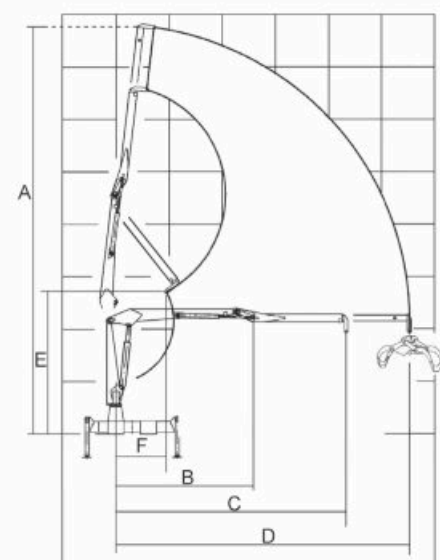
Increased log grab and rotor.

PENZ-AUSTRIA 4Z

CRANE 4Z - 4ZHL ideal for ZAM 70 - 110 Forestry line
CRANE 6Z- 6ZHL ideal for ZAM 110 - 140 Forestry line

FIGURES OF LIFTING CAPACITY DO INCLUDE THE WEIGHT OF ROTOR AND GRAB

DESCRIPTION		4Z	4ZHL	6Z	6ZHL
Net lifting moment	(KNm)	40,7	40,7	55	55
Log grab opening	(mt)	1,30	1,30	1,50	1,50
Pivot pin lifting power	(Kg)	5000	5000	5000	5000
Lifting capacity of extended boom with log grab	(Kg)	550	450	600	400
D -Maximum lenght with sliding extension	(mt)	6,00	7,00	7,00	8,50
C -Maximum lenght without sliding extension	(mt)	4,80	5,50	5,50	5,50
B -Lenght first sectoin	(mt)	2,50	2,90	2,90	2,90
Lifting capacity	(Kg)	1500	1300	2000	1800
A - Maximum height with sliding extension	(mt)	8,30	9,20	9,20	10,70
E - Height at the minimum distance of loading	(mt)	2,70	2,70	2,70	2,70
F - Minumum distance to start lifting	(mt)	1,20	1,30	1,30	1,30
Widht with stabilizer closed	(mt)	2,00	2,00	2,10	2,10
Weight of crane including log grab trunks	(Kg)	1100	1200	1500	1650





ZAM 140 Forestal TL super
Rear crane with hydraulic pull-out

Our engineering department desings with software 3D "Forestal" customized fittings establishments. The working machines are tested according to Italians and Europeans rules.

Any model can be provided with :
Hydraulic Traction

The system is made of hydraulic pistons attached to an hydraulic motor with disengage installed on the trailer. Traction allows a speedy of 1-5 km/h, and it can be engaged/diengaged during the movement. All the actions are managed from the drive's seat, using a keyboard.

Hydraulic tractions allows to invert the track road (ahead/reverse.)

FEATURES:

- Speed between 1-5 Km/h
- Engagment/disengagement during the movement
- It can be combined with any kind of tractor (also without synchronized PTO)
- It can be combined with one/more motor axles

On request:
MOTOR BRAKING SYSTEM
FOR DECLIVITY STRETCH

TECHNICAL PRIZE *ema* 2006

PNEUMATICS FOR FORESTRY TRAILERS



10.0/75-15.3
H = 760
L = 250



11.5/80-15.3
H = 860
L = 290



14/17.5
H = 920
L = 350



15/19.5
H = 1020
L = 380



560/545R 22,5
H = 1080
L = 560



385/55R 19.5 Ric.
H = 920
L = 385



385/65 22.5 Ric.
Flotation
H = 1050
L = 385



36 x 11 Ric.
Flotation
H = 850
L = 275



425/55R 19.5 Ric.
H = 960
L = 425

The company does not assume the responsibility of pneumatic's substitution because of the lack of avaiability and the increasing prices of the producing companies.



zaccariamorchi.com

ZACCARIA
QUALITY TRAILERS



ZACCARIA SRL

Via Enrico Fermi, 350

I - 41055 Montese (Modena) - Italy

Tel. +39 (0)59 981750

Fax: +39 (0)59 982353

www.zaccariamorchi.com

info@zaccariamorchi.com



www.facebook.com/zaccariamorchi



www.linkedin.com/company/zaccaria-srl



www.youtube.com/channel/UCe9-IOXLYuqygcinU1n51jA

Subsidiaries and Warehouses:

I - 41015 Nonantola (Modena)

Via Zuccola, 12 - Italy

I - 41057 Spilamberto (Modena)

Piazza Beccadori, 4 - Italy

